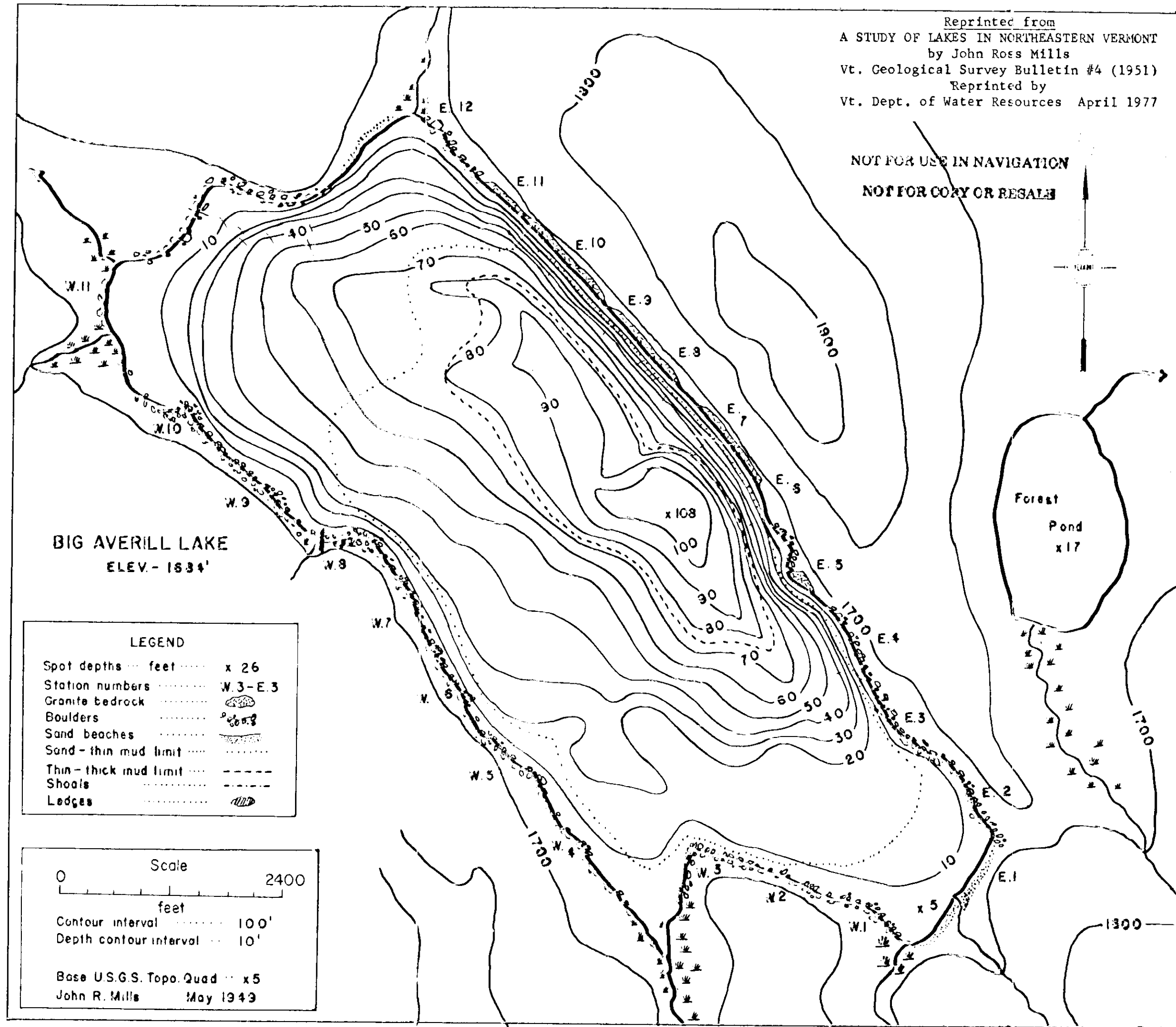


Reprinted from
 A STUDY OF LAKES IN NORTHEASTERN VERMONT
 by John Ross Mills
 Vt. Geological Survey Bulletin #4 (1951)
 Reprinted by
 Vt. Dept. of Water Resources April 1977

NOT FOR USE IN NAVIGATION
 NOT FOR COPY OR RESALE



BIG AVERILL LAKE
 ELEV. - 1634'

LEGEND		
Spot depths	feet	x 26
Station numbers		W.3-E.3
Granite bedrock		(stippled symbol)
Boulders		(circle with dot symbol)
Sand beaches		(wavy line symbol)
Sand - thin mud limit		(dotted line symbol)
Thin - thick mud limit		(dashed line symbol)
Shoals		(dashed line with dot symbol)
Ledges		(solid line with dot symbol)

Scale 0 2400 feet

Contour interval 100'

Depth contour interval 10'

Base U.S.G.S. Topo. Quad x5
 John R. Mills May 1949